



CASE MANAGEMENT SERVICES

Providing supports in the Supports for Community Living (SCL) and Michelle P Waiver (MPW)

What makes Columbus different?

For 39+ years, Columbus has been at the forefront of change in Case Management, always focused on putting YOU at the center of all planning and supports. We understand that your goals and visions are most important. We listen. We also know that achieving your goals depends on the people who support you, so we make sure our team comprises the most knowledgeable, skilled, dedicated, and passionate Case Managers available. We put every individual with intellectual/developmental disabilities, behavioral health concerns, or complex needs at the heart of what we do because everyone deserves a meaningful life.

The Future of Case Management:

We are committed to making sure you have the best supports available by investing in ongoing education and training programs for our staff. We also apply a team approach to supports so that your Case Managers has access to the collective knowledge of our entire team in areas of health, behavioral needs, social connections, and resources.

Person-Centered Support:

We don't believe a checklist represents a person. You need an advocate who is available and accessible - someone who knows you, understands how to listen, and addresses your concerns. With expert experience and a long-standing presence in your community, our Case Managers help you by navigating, accessing, and advocating for the resources you need, providing you with personalized choices and opportunities.

Here When You Need Us:

We understand that life does not stop at 5 PM. Rest assured that when you need us, we are as close as a phone call away. Whether it is to answer a question or assist in a crisis, our highly trained and experienced Columbus staff are there to help you.

Partner with Us

We at The Columbus Organization want to support you in your journey. We want to make sure you receive the services that are most important to you and will tirelessly aid you in living the life you want for years to come.

Our Services

Person-Centered Planning

Resource navigation

Advocacy

Complex care needs

Education

Community inclusion



For more information, please contact:

Jessica Paris, BSW

Executive State Director- KY

Mobile: (270) 789-8956

Email: jparis@columbusorg.com

THE COLUMBUS ORGANIZATION

Kentucky Office: (610) 592-0292



The Columbus ORGANIZATION

Because everyone deserves a meaningful life®

Find us on   www.ColumbusOrg.com

REALIZING AN INDIVIDUAL'S MEANINGFUL-LIFE GOALS THROUGH PERSON-CENTERED PLANNING, DATA ANALYTICS & INTERDISCIPLINARY SUPPORTS

New individual comes to Columbus with IDD, behavioral health, or complex care concerns

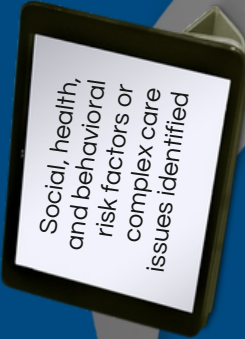
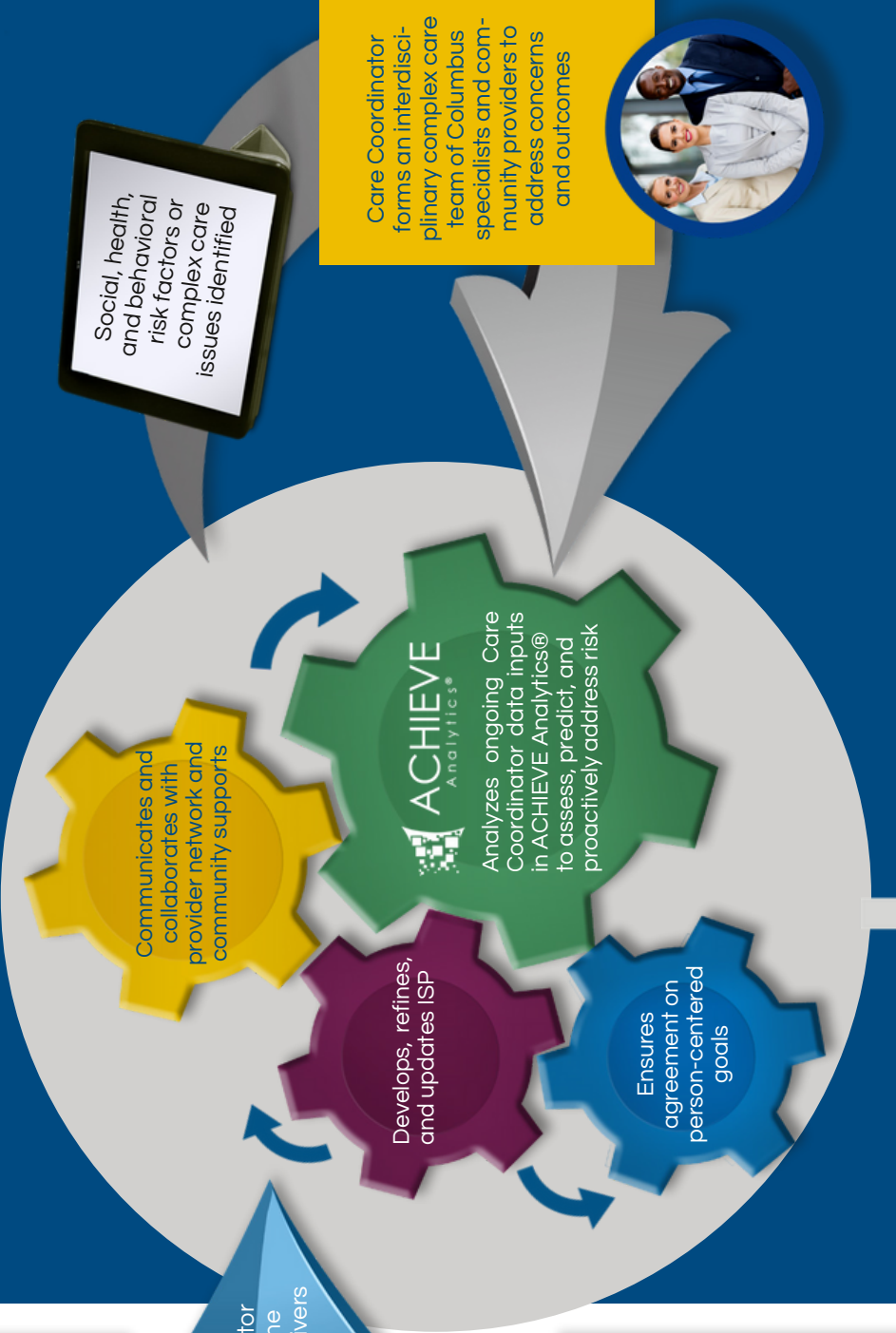


Our Care Coordinator begins work with the individual and caregivers



Columbus applies a Care Coordination team using a proprietary ACCOMPLISH® model for hiring, onboarding, training, assessment, and ongoing improvement to ensure the highest level of quality, available 24/7 through an escalating callback system

Integrated, data-driven, person-centered process overseen by a dedicated, leading-edge Quality Team that guides, monitors, and elevates the level of care



Care Coordinator forms an interdisciplinary team of Columbus specialists and community providers to address concerns and outcomes

