



# CASE MANAGEMENT SERVICES

Providing Support for individuals in the  
Acquired Brain Injury Waivers (ABI)

## What makes Columbus different?

For 39+ years, Columbus has been at the forefront of change in case management, always focused on putting YOU at the center of all planning and supports. We understand that your goals and visions are most important. We listen. We also know that achieving your goals depends on the people who support you, so we make sure our team comprises the most knowledgeable, skilled, dedicated, and passionate Case Managers available. We put every individual who has an acquired brain injury, behavioral health concerns, or complex needs at the heart of what we do because everyone deserves a meaningful life.

### The Future of Case Management:

We are committed to making sure you have the best supports available by investing in ongoing education and training programs for our staff. We also apply a team approach to supports so that your Case Manager has access to the collective knowledge of our entire team in areas of health, behavioral needs, social connections, and resources.

### Person-Centered Support:

We don't believe a checklist represents a person. You need an advocate who is available and accessible – someone who knows you, understands how to listen, and addresses your concerns. With expert experience and a long-standing presence in your community, our Case Managers help you by navigating, accessing, and advocating for the resources you need, providing you with personalized choices and opportunities.

### Here When You Need Us:

We understand that life does not stop at 5 PM. Rest assured that when you need us, we are as close as a phone call away. Whether it is to answer a question or assist in a crisis, our highly trained and experienced Columbus staff are there to help you.

### Partner with Us

We at The Columbus Organization want to support you in your journey. We understand the complex and ongoing recovery and support systems needed to re-gain a new lifestyle of independence after a Acquired Brain Injury. Our team has experienced staff and resources to help support you.

### Our Services

Person-Centered  
Planning

Resource  
navigation

Advocacy

Complex  
care needs

Education

Community  
inclusion



Find us on   [www.ColumbusOrg.com](http://www.ColumbusOrg.com)



### For more information, please contact:

**Jessica Paris, BSW**

Executive State Director- KY

Mobile: (270) 789-8956

Email: [jparis@columbusorg.com](mailto:jparis@columbusorg.com)

**THE COLUMBUS ORGANIZATION**

Kentucky Office: (610) 592-0292

# REALIZING AN INDIVIDUAL'S MEANINGFUL-LIFE GOALS THROUGH PERSON-CENTERED PLANNING, DATA ANALYTICS & INTERDISCIPLINARY SUPPORTS

New individual comes to Columbus with IDD, behavioral health, or complex care concerns

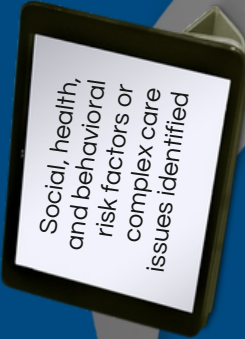
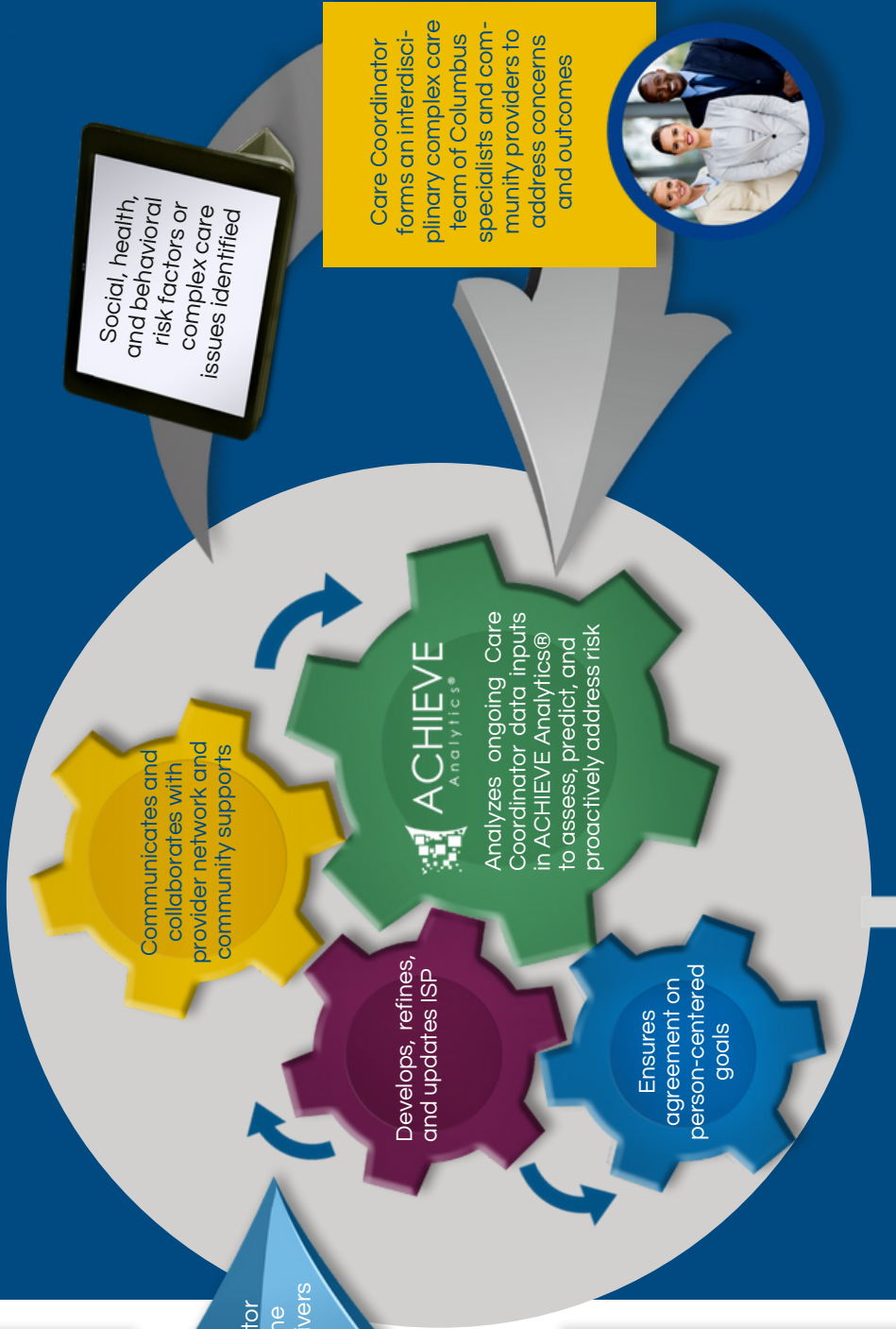


Our Care Coordinator begins work with the individual and caregivers



Columbus applies a Care Coordination team using a proprietary ACCOMPLISH® model for hiring, onboarding, training, assessment, and ongoing improvement to ensure the highest level of quality, available 24/7 through an escalating callback system

Integrated, data-driven, person-centered process overseen by a dedicated, leading-edge Quality Team that guides, monitors, and elevates the level of care



Care Coordinator forms an interdisciplinary complex care team of Columbus specialists and community providers to address concerns and outcomes

